

Assessment of the Immune Response Induced in Neonatal Calves by Vaccination with *Mycobacterium bovis* BCG Phipps Under Field Conditions

Eve-Lyne Quevillon^a, Fernando Díaz Otero^{b,*}, Laura Jaramillo Meza^b, José A. Gutiérrez Pabello^a, Felipe Ángel Castañeda Cuevas^a, Camila Arriaga Díaz^b, Xochitl Eva González González^b, Ricardo Lascurain^c.

^a Facultad de Medicina Veterinaria y Zootecnia, Universidad Nacional Autónoma de México, Av. Universidad 3000, D.F., 04510, México

^b Instituto Nacional de Investigaciones Forestales, Agrícolas y Pecuarias, Centro Nacional de Investigación Disciplinaria en Microbiología Animal, Carretera México-Toluca, Km 15.5, D.F., 05110, México

^c Facultad de Medicina, Universidad Nacional Autónoma de México, Av. Universidad 3000, D.F., 04510, México

ABSTRACT

Immunization of cattle with the bacillus Calmette-Guérin (BCG) vaccine, especially neonates, induces protection against *Mycobacterium bovis* (*M. bovis*) and has been proposed as a strategy for bovine tuberculosis (bTB) control. Therefore, the aim of this study was to evaluate the immune response induced under field conditions in neonatal calves vaccinated with BCG Phipps, a strain that has rarely been evaluated in the bovine population, using interferon (IFN)- γ and tuberculin tests, flow cytometry and enzyme-linked immunosorbent assay. Two groups (vaccinated and control) of 5 calves were monitored for 12 weeks, and increases in the *in vitro* IFN- γ production, the percentage of cluster of differentiation (CD)8⁺ T cells and the activation levels of CD4⁺ and CD8⁺ T cells were observed 3 to 4 weeks post-vaccination. Bovine purified protein derivative-specific IFN- γ production was increased about 4.8- and 5.5-fold in vaccinated animals compared to non-vaccinated animals 3 and 4 weeks post-vaccination respectively. CD8⁺ T cells of the vaccinated group were increased 1.6-, 1.5- and 1.6-fold at weeks 2, 3 and 4 respectively. Levels of activation were 1.7- and 1.9-fold higher for CD4⁺ T cells and 2.3- and 1.8-fold higher for CD8⁺ T cells in the vaccinated group at weeks 3 and 4 respectively in response to *M. bovis* antigens. However, no animals (vaccinated or control) showed positive results for the single intradermal comparative tuberculin test (SICTT). Therefore, our results indicate that vaccination with *M. bovis* BCG Phipps strain stimulated peripheral blood T cell activity and induced a cell-mediated immune response. In addition, vaccination did not interfere with the SICTT, as previously reported, which indicates that this vaccine could be successfully applied in bTB control campaigns.

Corresponding author: Fernando Díaz Otero, Department of Microbiology, Immunology and Infectious Diseases, Université de Montréal, 2900 Boulevard Edouard-Montpetit, Montréal, H3T 1J4, Canada, Instituto Nacional de Investigaciones Forestales, Agrícolas y Pecuarias, Centro Nacional de Investigación Disciplinaria en Microbiología Animal, Carretera México-Toluca, Km 15.5, D.F., 05110, México. Tel.: +52 55 36 18 08 00; Fax: +52 55 36 18 08 05.

Citation: Fernando Díaz Otero, Laura Jaramillo Meza, José Ángel Gutiérrez Pabello, Felipe Ángel Castañeda Cuevas, Camila Arriaga Díaz et al. (2017) Assessment of the Immune Response Induced in Neonatal Calves by Vaccination with Mycobacterium Bovis BCG Phipps Under Field Conditions. Journal of Veterinary Healthcare - 1(1):47-61. <https://doi.org/10.14302/issn.2575-1212.jvhc-17-1662>

Keywords: BCG Phipps; Bovine tuberculosis; Neonatal calf; Field condition; Immune response; T cell

Received Date: Jun 14,2017 **Accepted Date:** Aug 20,2017 **Published Date:** Aug 29,2017

Introduction

The persistence of bovine tuberculosis (bTB) poses a major economic problem and a global human health risk because the etiological agent, *Mycobacterium bovis* (*M. bovis*), can also infect humans. Conventionally, control of bTB is based on a test and slaughter strategy, which is a costly method for the developing world. Therefore, vaccination has been proposed as a potential control alternative, and studies have been performed to determine the efficacy of tuberculosis (TB) vaccines (1, 2). The bacillus Calmette-Guérin (BCG) has demonstrated variable efficacy against TB in humans and cattle (3). More recently, the application of alternative vaccination strategies, such as neonatal vaccination (4), and heterologous prime-boost vaccination (5), has significantly improved the efficacy of BCG in cattle. However, control of bTB using the BCG vaccine has not been regarded as a suitable option because it can interfere with the tuberculin skin test. Therefore, a vaccine devoid of this shortfall is urgently needed.

BCG vaccination of calves elicits a T helper (Th) 1-biased immune response (6), which is induced mainly by T cell antigen-specific interferon (IFN)- γ secretion (4). In cattle infected with *M. bovis*, the $\gamma\delta$ workshop cluster (WC)1⁺, the cluster of differentiation (CD)

4⁺ and the CD8⁺ T cell subpopulations have been identified as producers of IFN- γ (7). Moreover, changes in the percentages and in the activation levels (CD25⁺) of these T cell subpopulations were demonstrated in the peripheral blood of experimentally infected and BCG-vaccinated cattle, indicating their involvement in anti-mycobacterial immune response (8). However, under field conditions, the response to *M. bovis* BCG vaccination is not well understood, as most of these previous experiments were conducted under controlled conditions. Few studies have been performed in a more natural cattle-to-cattle transmission setting, which could significantly influence the results found in controlled experiments.

Any investigation of immunity to an infection or vaccine should take into account the responses that develop under natural conditions. Therefore, the aim of this study was to assess the immune responses induced under field conditions in neonatal calves by vaccination with BCG Phipps, a strain that is not well known as an immunogen, using the tuberculin and IFN- γ tests, enzyme-linked immunosorbent assay (ELISA) and flow cytometry, to provide information for the development of novel vaccines and vaccination strategies.

Materials and Methods

Ethics statement

Animals used in this study belong to a commercial farm and have been submitted only to the standard clinical practices specifically regulated by the Mexican legislation on TB control program (9), plus vaccination and blood sampling.

Animals and experimental design

Holstein-Friesian female calves clinically healthy (between 9-46 days of age, mean age 32 days) were employed in the experiment. The neonatal animals were obtained from a herd with a recent history of bTB and a prevalence of 40 % at the beginning of the study, as determined using the single intradermal comparative tuberculin test (SICTT). The calves (n = 10) provided negative results for the IFN- γ test and antibody levels measured by ELISA (to both avian and bovine antigens). Five calves were chosen randomly and vaccinated with BCG Phipps, and five calves were injected with phosphate-buffered saline (PBS) solution. Then, kinetics of the IFN- γ and antibody responses and changes in T cell subpopulations and cellular activation were evaluated. The SICTT was performed 12 weeks post-vaccination. The experiments were conducted in field conditions and the animals were not segregated from other calves and cattle during the study.

Vaccination

The animals were injected subcutaneously in the right side of the neck with a 21 g x 38 mm needle containing a 1.0 ml inoculum of 10^6 colony forming unit (CFU) of BCG Phipps (lot number 001-2013-7H9; kindly gifted by Dr. Clara I. Espitia Pinzón, Instituto de Investigaciones Biomédicas, UNAM, Mexico City, Mexico). This strain was selected because it induced the best protection against challenge in a mouse model where 10 BCG different strains were compared (10). Briefly, bacteria were grown to mid log phase in 7H9 medium (Difco; BD, Oxford, UK) supplemented with 0.05 % Tween 80 (Sigma-Aldrich, Poole, United Kingdom) and ADC (albumin-dextrose-catalase) (BD Diagnostics, Loveton Circle Sparks, USA). Vaccine was then adjusted

to contain 10^6 bacteria per ml and stored in glycerol at -80 °C until use.

Production and measurement of IFN- γ

The bovine IFN- γ test was used for two purposes. First, to select animals that were negative for *M. avium* and *M. bovis* antigens. Second, to monitor the IFN- γ responses following vaccination with BCG. Briefly, heparinized blood (1.5 ml) was dispensed into three wells of 24-well plates (Nunclon, Roskilde, Denmark), and either avian or bovine purified protein derivative (PPD), both at 20 μ g/ml, or PBS was added. The cultures were incubated for 24 h at 37 °C, and the IFN- γ levels in the plasma supernatants were measured using a sandwich ELISA (kit Bovigam®, Prionics AG, Schlieren-Zurich, Switzerland) as described previously (11). The results were interpreted according to the criteria described in the commercial kit instructions.

Detection of IgG antibodies in serum

Serological responses were assessed by ELISA, as described previously (12), and were used for two purposes: to select animals that were negative for *M. avium* and *M. bovis* antigens and to monitor the antibody responses following BCG vaccination. Briefly, the plates (Nunclon, Roskilde, Denmark) were coated overnight at room temperature with 1 μ g/well of culture filtrate protein extract (CFPE) from *M. avium* or *M. bovis* in 0.1 M carbonate buffer and blocked with skim milk powder (3 % in PBS) for 1 h at 37 °C. Subsequently, the plates were incubated with sera (1:100) and then with peroxidase-labeled G protein (1:10,000; Sigma-Aldrich, St. Louis, MO, USA) both during 1 h at 37 °C. The chromogenic substrate, 0.04% o-phenylenediamine (Sigma-Aldrich, St. Louis, MO, USA) and hydrogen peroxide (0.04% in citrate buffer) were added, and the plates were incubated at 37 °C for 5 min. The reaction was stopped with 2 M sulfuric acid solution and the optical density (OD) values were read at 492 nm in a spectrophotometer (Benchmark Plus Microplate Spectrophotometer, Bio-Rad Laboratories, Hercules CA,

USA).

An analysis of the receiver operator characteristic curve for the OD_{492nm} cut-off point was performed from SICTT data using Win Episcopo 2.0 software (Learning Technology Section, College of Medicine & Veterinary Medicine, The University of Edinburgh, Edinburgh, Scotland, UK). The results showed an OD_{492nm} cut-off point of 0.370. A serum containing high levels of antibody from a cow with disseminated lesions of bTB was used as a positive control and a negative control was obtained from a cow on a farm without a recent history of bTB; the cow tested negative for SICTT, IFN- γ and polymerase chain reaction.

Flow Cytometry

The lymphocyte subpopulations were evaluated by flow cytometry as described previously (13). Heparinized blood was obtained from animals, and the red blood cells were lysed. To evaluate cellular activation, blood samples were previously incubated for 24 h at 37 °C with either *M. bovis* CFPE (7 μ g/ml) or PBS (14). Aliquots of 5×10^5 cells suspended in PBS containing 0.2% bovine serum albumin and 0.2% sodium azide (cell staining buffer) were incubated for 20 min at room temperature using mouse monoclonal antibodies (mAbs) to bovine WC1-N3 (clone CACTB32A, isotype IgG1), CD4 (clone CACT138A, isotype IgG1), CD8 (clone BAT82A, isotype IgG1), and CD25 (clone CACT108, isotype IgG2a), all obtained from VMRD Inc. (Pullman, WA, USA). Then, the cells were washed twice with cell staining buffer, and stained either with a fluorescein isothiocyanate (FITC)-conjugated anti-mouse IgG1 or a phycoerythrin (PE)-conjugated anti-mouse IgG2a antibody (Jackson ImmunoResearch Laboratories, Inc., West Baltimore Pike, PA, USA) for 20 min at room temperature in the dark. After incubation, the cells were washed twice, suspended in FACSflow solution, and analyzed on a FACSCalibur flow cytometer equipped with

488-nm argon-ion laser and the CellQuest software (BD Biosciences, San José, CA, USA). To analyze the staining of cell surface markers, 10 000 events were acquired and the lymphoid cells were gated by their physical properties (size and internal complexity). After that, a second gate was done based on immunofluorescent characteristics of the gated cells, evaluating fluorescence by quadrant graphics in logarithmic scale. FITC-positive, and PE-positive cells were observed by FL1 channel (filter 530/30 SP) and FL2 channel (filter 585/42 BP), respectively. To established differences of the stained and unlabeled cell populations, the compensation was adjustment as follow: FL1 0.8% FL2 and FL2 24.3 % FL1. To analyze cell staining, the quadrants for positive and negative fluorescence of gated cells were established manually based on the distribution of cells stained with secondary antibodies alone. Data were analyzed using FlowJo 7.6.1 software (Tree Star Inc., Ashland, OR, USA).

Single Intradermal Comparative Tuberculin Test

The SICTT was conducted by intradermal injection of the cattle with 0.1 ml (1 mg/ml) of bovine PPD and 0.1 ml (0.5 mg/ml) of avian PPD (PRONABIVE, Mexico City, Mexico). The skin thickness was measured before the intradermal injection and at 72 h post-injection. The results were recorded as the increase in skin thickness at 72 h compared to the thickness pre-injection. Values of both, avian and bovine PPD were plotted and the intersection point gave the result according to the official graphic of the Mexican Official Norm (9).

Statistical Analysis

Significant differences between groups for all the tests conducted in this study were determined using student t-tests with JMP 5.0.1 software for Windows (SAS Institute Inc., Cary, NC, USA). A probability of $P < 0.05$ was considered significant.

Results

IFN- γ Production

The production of IFN- γ prior to and at intervals ranging from 1 to 12 weeks post-vaccination was measured in antigen-stimulated blood cultures (Table 1). No animal from either group showed an IFN- γ response to avian or bovine PPD prior to the beginning of the study (weeks -2 and 0). Significant increases in PPD-specific IFN- γ production in response to vaccination were evident at 4 weeks for avian PPD (0.961 ± 0.535 vs. 0.114 ± 0.126 , $P = 0.0087$) and 3 (0.638 ± 0.365 vs. 0.134 ± 0.141 , $P = 0.0239$) and 4 (0.987 ± 0.611 vs. 0.180 ± 0.197 , $P = 0.0229$) weeks for bovine PPD. By week 8, the cytokine levels had waned significantly compared to week 4. No significant increase was detected in the control group. The individual avian and bovine PPD-specific IFN- γ OD values varied widely among vaccinated animals at week 4 post-vaccination (Fig. 1), compared to the control group (Fig. 2).

IgG Antibody Levels

An ELISA utilizing *M. avium* or *M. bovis* CFPE as the capture antigen was used to measure the IgG antibody levels in serum prior to and at intervals ranging from 1 to 12 weeks post-vaccination. No significant

differences were observed at any time point between the groups (data not shown).

T cell Subpopulations

The T cell subpopulations (WC1⁺, CD4⁺ and CD8⁺) were investigated using flow cytometry from 1 to 12 weeks post-vaccination (Fig. 3). No differences were observed in the percentages of WC1⁺ and CD4⁺ T cells. Nevertheless, there was a significant increase in CD8⁺ T cells of the vaccinated group at weeks 2 (21.09 ± 4.05 % vs. 12.89 ± 3.74 %, $P = 0.0105$), 3 (22.94 ± 2.32 % vs. 14.89 ± 3.97 %, $P = 0.0047$) and 4 (24.21 ± 4.37 % vs. 14.95 ± 4.32 %, $P = 0.0098$) post-vaccination. By week 8, these percentages had decreased, although the difference was still significant compared to the control group (19.59 ± 2.20 % vs. 14.87 ± 2.16 %, $P = 0.0091$). CD8⁺ T cells of the vaccinated group were increased 1.6-, 1.5- and 1.6-fold at weeks 2, 3 and 4 respectively.

T cell Activation Levels

Blood samples from both groups of animals were stimulated with PBS or *M. bovis* CFPE for 24 h, and the T cell activation (CD25⁺) was evaluated from 1 to 12 weeks post-vaccination. Both groups showed similar

Table 1. Levels of IFN- γ detected in PPD-stimulated whole blood cultures of BCG Phipps-vaccinated and control calves.

Weeks post-vaccination	Vaccinated group ^a		Control group ^a	
	Avian PPD	Bovine PPD	Avian PPD	Bovine PPD
-2	0.039 ± 0.041	0.034 ± 0.060	0.006 ± 0.009	0.001 ± 0.002
0	0.064 ± 0.054	0.041 ± 0.054	0.057 ± 0.086	0.084 ± 0.026
1	0.428 ± 0.387	0.190 ± 0.183	0.203 ± 0.201	0.104 ± 0.093
2	0.733 ± 0.881	0.407 ± 0.405	0.145 ± 0.165	0.030 ± 0.019
3	0.471 ± 0.311	0.638 ± 0.365^b	0.130 ± 0.123	0.134 ± 0.141
4	0.961 ± 0.535^b	0.987 ± 0.611^b	0.114 ± 0.126	0.180 ± 0.197
8	0.322 ± 0.339	0.381 ± 0.349	0.150 ± 0.257	0.077 ± 0.121
12	0.023 ± 0.022	0.048 ± 0.026	0.011 ± 0.012	0.015 ± 0.021

^a Values represent the OD_{450nm} of the antigen minus the OD_{450nm} of the medium alone. ^b Statistically significant difference between the vaccinated and control groups ($P < 0.05$). The results are presented as the group mean \pm SD of the group.

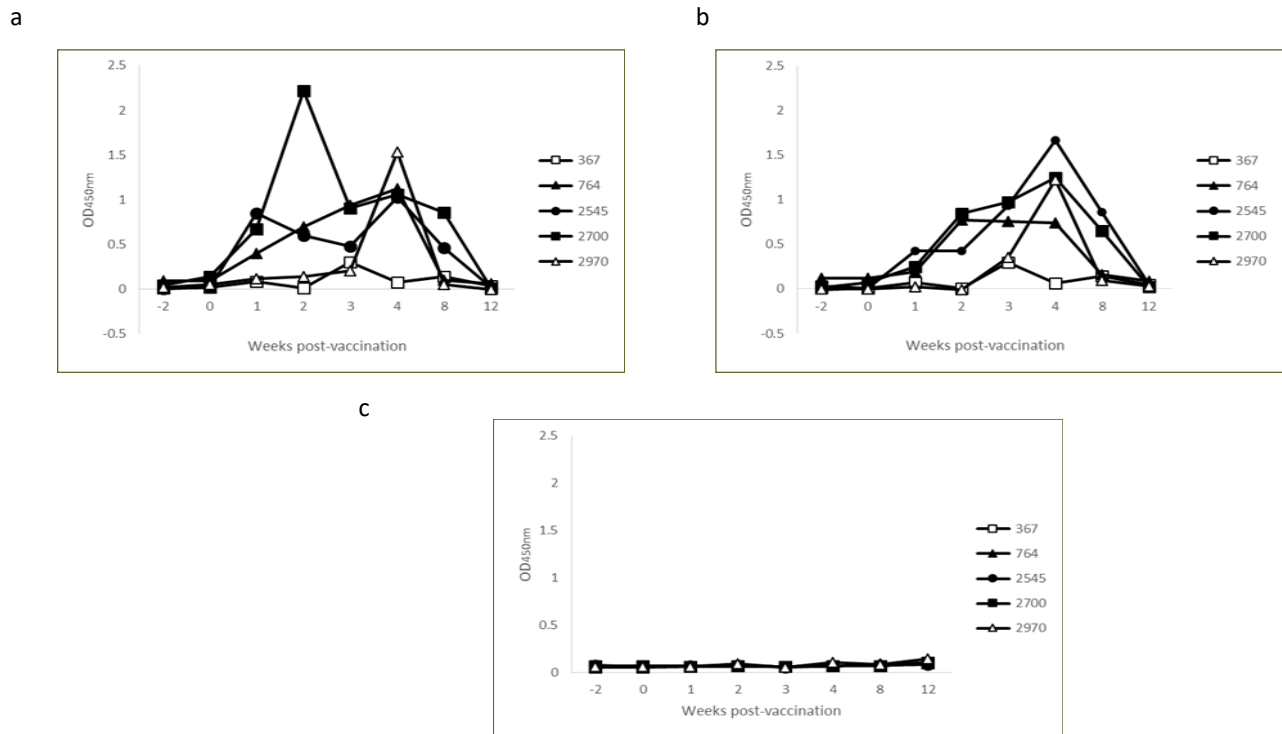


Figure 1. Kinetics of IFN- γ production in avian (a) and bovine (b) PPD-stimulated and non-stimulated (c) whole blood cultures from individual calves vaccinated with BCG Phipps. (whole blood cultures from individual calves vaccinated with BCG Phipps.)

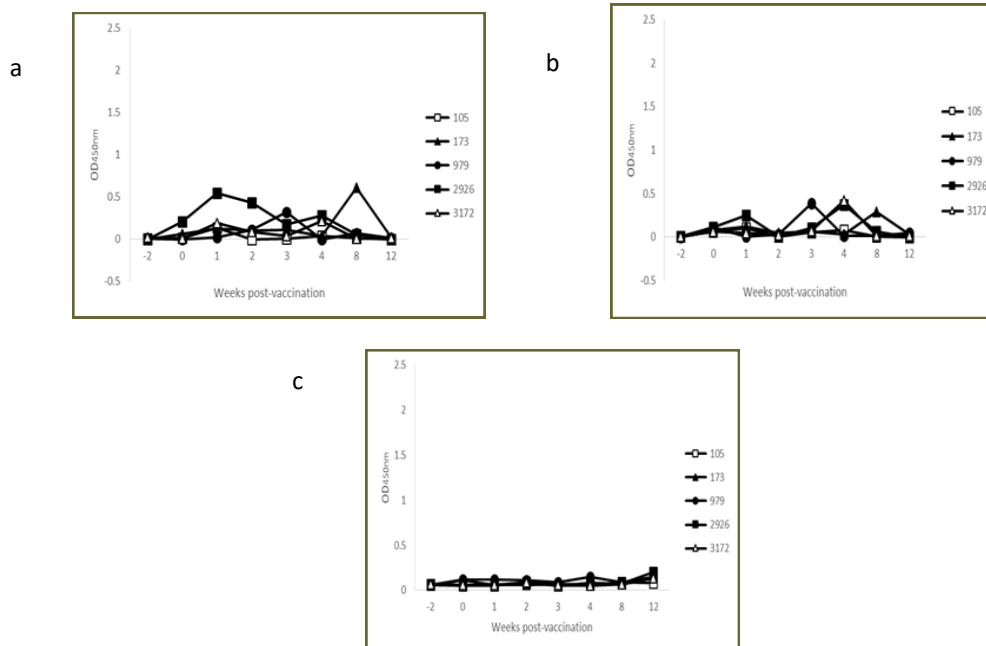


Figure 2. Kinetics of IFN- γ production in avian (a) and bovine (b) PPD-stimulated and non-stimulated (c) whole blood cultures from individual control calves.

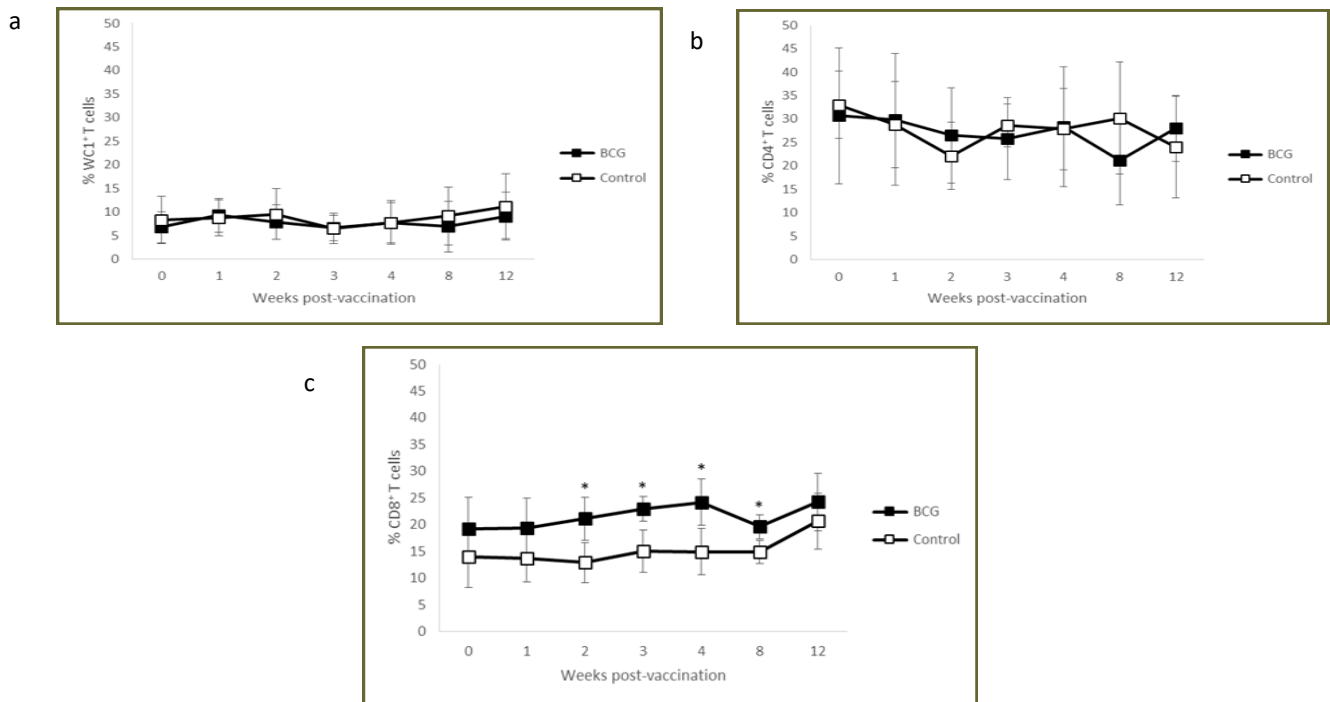


Figure 3. Kinetics of WC1⁺ (a), CD4⁺ (b) and CD8⁺ (c) T cells in the peripheral blood of BCG Phipps-vaccinated and control calves. Each square represents the group mean \pm SD of the group. * Statistically significant difference ($P < 0.05$).

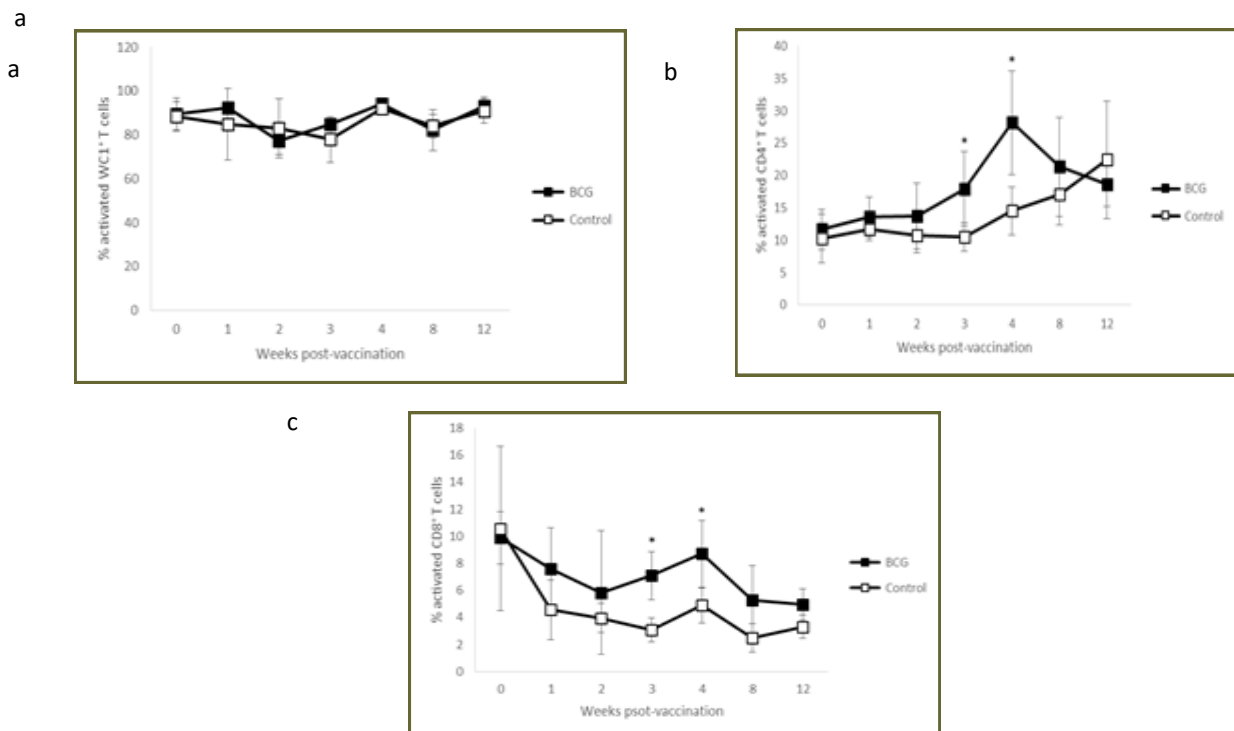


Figure 4. Kinetics of WC1⁺ (a), CD4⁺ (b) and CD8⁺ (c) activated (CD25⁺) T cells in *M. bovis* CFPE-stimulated peripheral blood of BCG Phipps-vaccinated and control calves. Each square represents the group mean \pm SD of the group. * Statistically significant difference ($P < 0.05$).

activation levels with little variation between weeks post-vaccination in the cultures without antigen stimulation (PBS). The mean percentages during the study were 63.29 ± 12.16 %, 11.92 ± 3.10 % and 5.06 ± 2.60 % for WC1⁺, CD4⁺ and CD8⁺ T cells, respectively (data not shown). In relation to the cultures stimulated with *M. bovis* antigens, no significant differences were observed in the activation of WC1⁺ T cells (Fig. 4a).

Very high percentages were detected in both groups during the entire experiment, with almost all of the cells showing an activated phenotype. However, the levels of activation were significantly higher in the vaccinated group at weeks 3 and 4 for CD4⁺ T cells (17.95 ± 5.71 % vs. 10.55 ± 2.20 %, $P = 0.0308$ and 28.18 ± 8.03 % vs. 14.55 ± 3.71 %, $P = 0.0113$, respectively) and CD8⁺ T cells (7.09 ± 1.77 % vs. 3.08 ± 0.87 %, $P = 0.0019$ and 8.70 ± 2.46 % vs. 4.88 ± 1.27 %, $P = 0.0149$, respectively) in response to *M. bovis* CFPE (Fig. 4b, c). Levels of activation were 1.7- and 1.9-fold higher for CD4⁺ T cells and 2.3- and 1.8-fold higher for CD8⁺ T cells in the vaccinated group

at weeks 3 and 4 respectively in response to *M. bovis* antigens. Examples of individual data of flow cytometry evaluating T cells activation in whole blood stimulated with a CFPE of *M. bovis* from an vaccinated animal are shown in Figure 5.

SICTT

The SICCT skin test was conducted at 12 weeks post-vaccination in all calves (Table 2). No positive reactions were observed in any of the vaccinated or control animals.

Discussion

In the present study, the immune responses induced in calves by vaccination with BCG Phipps, a strain that has rarely been studied in humans, mice and bovines, was evaluated. To avoid any interference with environmental mycobacteria in the development of BCG-induced immunity, we vaccinated the calves neonatally. Additionally, the study was performed on a farm managed under routine husbandry conditions,

Table 2. SICCT skin test responses to PPD from BCG Phipps-vaccinated and control calves at 12 weeks post-vaccination.

Groups	SICTT (mm) ^a	
	Avian PPD	Bovine PPD
BCG		
367	0	0
764	0	1
2545	1	1
2700	0	0
2970	0	0
Control		
105	0	0
173	0	0
979	1	1
2926	0	0
3172	0	0

^a Increases in skin thickness (thickness at 72 h minus thickness at 0 h).

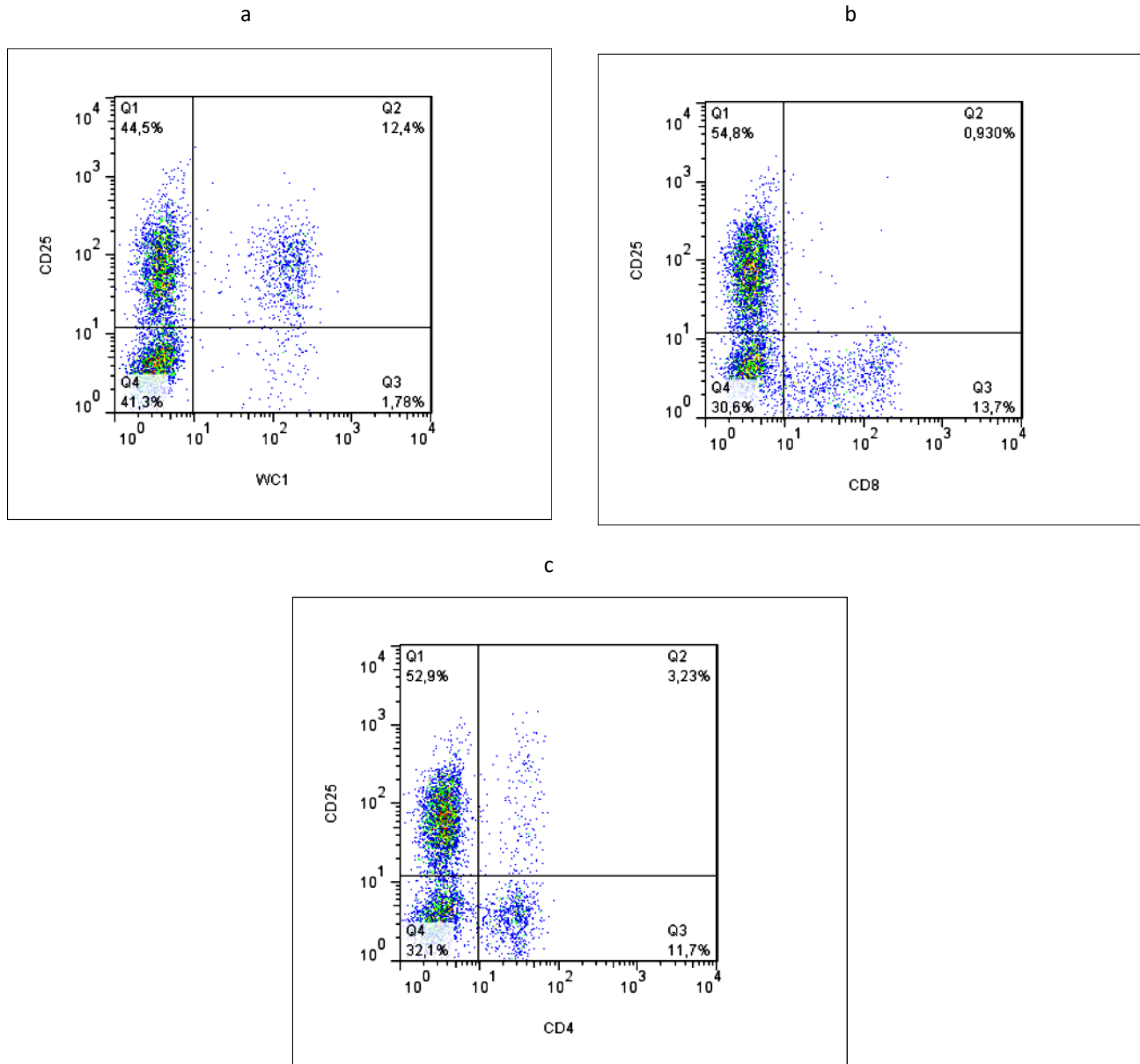


Figure 5. Representative graphs of flow cytometry evaluating the activation cellular marker CD25⁺ on different T cell subpopulations (WC1⁺ (a), CD4⁺ (b) and CD8⁺ (c)) in whole blood from one animal vaccinated with BCG after 24 h of culture with a CFPE from *M. bovis*

which allowed the evaluation of the immune responses induced by the vaccine, including all the environmental factors present in a dairy herd setting.

BCG vaccination of neonate calves is associated with a Th1-type immune response, which is important for the induction of protection (4). IFN- γ is an essential component of protective immune response to *M. bovis*, and vaccines that fail to prime this recall memory response invariably fail to protect against virulent challenge (15). In our experiment, the protection induced by the vaccine could not be assessed through challenge/slaughter strategy due to establishment constraints and may be investigated in future studies. However, the IFN- γ production was evaluated as surrogate marker of immunogenicity. It has been reported that IFN- γ levels increase by 2-4 weeks post-vaccination and then decrease after week 5 (4), which is similar to our results. Indeed, we observed significant increases at week 4 to avian PPD and at weeks 3 and 4 to bovine PPD, with a decrease at week 8. The induction of IFN- γ to both PPD after vaccination with BCG has been observed with Pasteur strain as well (16). Therefore, vaccination stimulated the production of a surrogate marker of protection.

Interestingly, an experience demonstrated that not all animals were protected to the same extent after vaccination with BCG. In the study, they divided the animals into protected and not-protected by considering all BCG vaccinates with CFU counts lower than the animal presenting the lowest CFU counts in the non-vaccinated group as protected; all other BCG vaccinates could be considered as not protected. Using this criterion, 6/12 animals would have been protected by BCG vaccination after 3 weeks (17). In the present work, the individual avian and bovine IFN- γ OD values varied widely among vaccinated animals. We observed that not all animals developed an IFN- γ recall response post-vaccination. Consequently, we suggest that these calves were probably not protected by the vaccine,

however, more investigations are needed to support these results.

There is little evidence that the induction of antibodies post-vaccination plays an important role in bTB resistance (18). Moreover, it has been reported that it may contribute to the dissemination of extra-thoracic disease in calves. In our study, vaccination of calves with BCG Phipps did not induce an antibody response to mycobacterial antigens early after vaccination, as previously reported (19).

Few data exist regarding the changes in circulating T cells after vaccination of cattle with BCG. A study detected three phases in BCG Danish-vaccinated cattle that were similar to those observed in infected animals (8). The first phase was observed two weeks post-vaccination and showed an increase in $\gamma\delta$ WC1⁺ T cells. The second and third phases showed increases in CD4⁺ and CD8⁺ T cells 4-6 and 8-10 weeks after vaccination, respectively. Other studies performed in BCG-vaccinated calves demonstrated that the animals developed a cellular-mediated immunity (CMI) response; however, no differences in peripheral T cell subpopulations were observed (20). In the present study, no significant changes were observed in $\gamma\delta$ WC1⁺ and CD4⁺ T cells, while a significant increase was detected in CD8⁺ T cells 2-8 weeks post-vaccination. Antigenic presentation of intracellular bacteria is achieved mainly through major histocompatibility complex (MHC)-I molecules, leading to the activation of CD8⁺ T cells (21). The increase in CD8⁺ T cells observed in this study could indicate that BCG antigens induced the MHC-I pathway, and the activation and proliferation of these cells, leading to a CMI-biased immune response.

CD25 expression was evaluated in T cell subpopulations. As previously observed (22), no differences were detected between groups in unstimulated blood (data not shown). However, in blood stimulated with mycobacterial antigens, increased

activation levels of T cell subpopulations have been reported in *M. bovis*-infected and BCG-vaccinated animals (23). In our experiment, antigen stimulation led to pronounced activation of $\gamma\delta$ WC1⁺ T cells in both groups during all the study, which prevented the observation of any effect of vaccination. These high levels of cellular activation have been observed in tuberculous and BCG-vaccinated cattle (24), however, lower levels were observed in control animals (14). This potent activation may have been a consequence of cross-reactivity between PPD and environmental mycobacteria antigens. It has been demonstrated that $\gamma\delta$ T cells can be primed in response to mycobacterial antigens, resulting in more rapid and robust responses *in vitro*, without the need for prior selection and expansion (25). Moreover, CD25 expression on $\gamma\delta$ WC1⁺ T cells is not dependent on exposure to exogenous antigen, although it is further up-regulated following stimulation of the cells. This is in contrast with α/β T cells, on which CD25 is only expressed as a transient event following antigenic or mitogenic stimulation (26). It has been demonstrated, in bovine $\gamma\delta$ WC1⁺ T cells that had not been exposed to *Theileria annulata*, an up-regulation of CD25 on the majority of these cells after stimulation with parasite antigens, indicating that there must be a high frequency of precursors capable of responding (27). In addition, the high proportion of $\gamma\delta$ WC1⁺/CD25⁺ T cells observed in unstimulated blood showed that these cells present high levels of activation even without stimulation. Otherwise, vaccination significantly increased the expression of CD25 among CD4⁺ and CD8⁺ T cells by weeks 3 and 4, indicating that both subpopulations were activated simultaneously and play a role in immunity induced by BCG Phipps.

The tuberculin skin test remains the immunodiagnostic tool most commonly applied for detecting bTB (28). However, BCG-vaccinated cattle can react positively to the test, invalidating the diagnosis (29). In the present study, the SICTT was performed at

12 weeks post-vaccination, and no animals, vaccinated or control, tested positive, demonstrating that BCG vaccination does not always interfere with the tuberculin test. The absence of a tuberculin response could be due to the strain used (Phipps), as the majority of studies in which reactivity was observed were performed using the Danish or Pasteur strain of BCG (18, 28). It has been shown that the genetic diversity of different BCG strains influences the expression of genes, immunogenicity, virulence and viability, which may affect the animals' immune response to the tuberculin test (30, 31, 32, 33).

Few studies have evaluated the BCG Phipps strain. In humans, a study showed that the BCG Phipps strain had the lowest level of vaccine efficacy compared to BCG Pasteur, demonstrating differences in protection (34). Another study conducted in mice with 10 different strains of BCG also demonstrated differences in protection (10). Moreover, each strain showed a particular Th1 and Th2 response profile, exhibiting differences in immunogenicity. BCG Phipps induced the highest protection level and moderate delayed hypersensitivity responses post-challenge. In cattle, a study demonstrated that BCG Phipps induced significant efficacy against *M. bovis* (35). Results from that study showed that 9/10 vaccinated animals reacted to the tuberculin test; however, this test was performed on 5- to 6-month-old animals, and the study did not mention which tuberculin test was applied. In our study, the lack of reaction to the SICTT could demonstrate that the Phipps strain induced an immune profile different from the Pasteur and Danish strains in neonatal calves.

The reason why the vaccine did not induce a delayed hypersensitivity reaction is not known. However, the vaccine induced a specific IFN- γ production *in vitro*, demonstrating two separate responses. The dissociation of these responses post-vaccination has been described in newborns (36). Moreover, in neonatal cattle vaccinated with BCG, it has

been shown that positive IFN- γ responses are observed in both tuberculin-positive and -negative animals (28). It remains unclear whether the independence of these responses is due to greater sensitivity of the IFN- γ assay or a specific subpopulation of T cells present in the blood only. In a TB mouse model, it has been demonstrated that the T cell subpopulations involved in the delayed hypersensitivity reaction differ markedly from those participating in protection (37, 38). Therefore, the mechanisms involved in these responses remain an interesting topic for future research.

Conclusion

The results from this study provide information on the immune responses induced in neonatal calves under field conditions following vaccination with BCG Phipps, a strain rarely evaluated in the bovine population. The vaccination stimulated peripheral blood T cell activity and induced a CMI response that was detectable 3-4 weeks post-vaccination, characterized by specific IFN- γ production, increases in the percentages of CD8⁺ T cells and activation levels of CD4⁺ and CD8⁺ T cells, indicating their role in BCG-induced immunity. Moreover, an important finding was that the BCG Phipps vaccine did not interfere with the SICTT performed 12 weeks post-vaccination, offering an attractive tool for bTB control programs. Greater understanding of the immune responses associated with vaccination against *M. bovis* in cattle will help in the development of strategies for prevention of the disease, and further studies are required to evaluate the protective efficacy of this BCG strain, especially in a natural transmission setting.

Conflict of Interest

The authors have declared that no competing interest exists.

Author Contributions

Eve-Lyne Quevillon: PhD student (This study was part of

her PhD research work).

Fernando Díaz-Otero: As the project manager, he realized the experimental design and found the financial support for the project.

Laura Jaramillo-Meza: She contributed in the planning of the project and in the realization of laboratory activities.

José A. Gutiérrez-Pabello: He participated in the planning of the project and in the analysis of the results.

Ricardo Lascurain: He provided the flow cytometer and participated in revising the manuscript.

Camila Arriaga: She participated in the planning of the project.

Felipe A. Castañeda and Xochitl E. González: As veterinarians, they were involved in the sampling of animals and in the realization of laboratory techniques.

Funding Source

This work was supported by the Instituto Nacional de Investigaciones Forestales, Agrícolas y Pecuarias, grant number 142 945 340 13.

Acknowledgements

We thank the farmers who kindly provided the animals for this study and the Instituto Nacional de Enfermedades Respiratorias that allowed us to use the cytometer.

References

1. Buddle, B.M. (2010). Tuberculosis vaccines for cattle: the way forward. *Expert. Rev. Vaccines* 9, 1121–1124.
2. Parlane, N.A., Shu, D., Subharat, S., Wedlock, D.N., Rehm, B.H., de Lisle, G.W., Buddle, B.M. (2014). Revaccination of cattle with Bacille Calmette-Guérin two years after first vaccination when immunity has waned, boosted protection against challenge with *Mycobacterium bovis*. *PLoS One*;9(9):e106519.
3. Buddle, B.M., Wards, B.J., Aldwell, F.E., Collins,

- D.M., de Lisle, G.W. (2002). Influence of sensitisation to environmental mycobacteria on subsequent vaccination against bovine tuberculosis. *Vaccine* 20, 1126–1133.
4. Hope, J.C., Thom, M.L., McAulay, M., Mead, E., Vordermeier, H.M., Clifford, D., Hewinson, R.G., Villarreal-Ramos, B. (2011). Identification of surrogates and correlates of protection in protective immunity against *Mycobacterium bovis* infection induced in neonatal calves by vaccination with *M. bovis* BCG Pasteur and *M. bovis* BCG Danish. *Clin. Vaccine Immunol.* 18, 373–379.
 5. Vordermeier, H.M., Villarreal-Ramos, B., Cockle, P.J., McAulay, M., Rhodes, S.G., Thacker, T., Gilbert, S.C., McShane, H., Hill, A.V., Xing, Z., Hewinson, R.G. (2009). Viral booster vaccines improve *Mycobacterium bovis* BCG-induced protection against bovine tuberculosis. *Infect. Immun.* 77, 3364–3373.
 6. Kaufmann, S.H. (2006). Envisioning futures strategies for vaccination against tuberculosis. *Nat. Rev. Immunol.* 6, 699-704.
 7. Kennedy, H.E., Welsh, M.D., Bryson, D.G., Cassidy, J.P., Forster, F.I., Howard, C.J., Collins, R.A., Pollock, J.M. (2002). Modulation of immune responses to *Mycobacterium bovis* in cattle depleted of WC1+ $\gamma\delta$ T cells. *Infect. Immun.* 70, 1488-1500.
 8. Buza, J., Kiros, T., Zerihun, A., Abraham, I., Ameni, G. (2009). Vaccination of calves with *Mycobacterium bovis* Bacilli Calmete Guerin BCG) induced rapid increase in the proportion of peripheral blood gamma delta T cells. *Vet. Immunol. Immunopathol.* 130, 251-255.
 9. Norma Oficial Mexicana NOM-031-ZOO-1995. 27 de agosto 1998. Campaña Nacional Contra la Tuberculosis Bovina (*Mycobacterium bovis*). Secretaria de Agricultura, Ganadería, Desarrollo Rural, Pesca y Alimentación. Servicio Nacional de Sanidad, Inocuidad y Calidad Agro alimentaria. <http://www.gob.mx/senasica/documentos/norma-oficial-mexicana-nom-031-zoo-1995-campana-nacional-contra-la-tuberculosis-bovina-Mycobacterium-bovis>, September 26, 2016.
 10. Castillo-Rodal, A.I., Castañón, A.M., Hernández, P.R., Calva, J.J., Sada, D.E., López, V.Y. (2006). *Mycobacterium bovis* BCG substrains confer different levels of protection against *Mycobacterium tuberculosis* infection in a BALB/c model of progressive pulmonary tuberculosis. *Infect. Immun.* 74, 1718-1724.
 11. Rothel, J.S., Jones, S.L., Corner, L.A., Cox, J.C., Wood, P.R. (1990). A sandwich enzyme immunoassay for bovine interferon- γ and its use for the detection of tuberculosis in cattle. *Aust. Vet. J.* 67, 134–137.
 12. Estrada-Chávez, C., Mancilla, R., Arriaga, D.C., Pérez, G.R., Díaz, O.F. (2001). Determinación de anticuerpos anti-PPD en hatos lecheros con distintas prevalencias de tuberculosis bovina en México. *Vet. Mex.* 32, 207-211.
 13. Sopp, P., Howard, C.J., Hope, J.C. (2006). Flow cytometric detection of gamma interferon can effectively discriminate *Mycobacterium bovis* BCG-vaccinated cattle from *M. bovis*-infected cattle. *Clin. Vaccine Immunol.* 13, 1343-1348.
 14. Smyth, A.J., Welsh, M.D., Girvin, R.M., Pollock, J.M. (2001). In vitro responsiveness of $\gamma\delta$ T cells from *Mycobacterium bovis*-infected cattle to mycobacterial antigens: predominant involvement of WC1+ cells. *Infect. Immunol.* 69, 89–96.
 15. Hogarth, P.J., Hewinson, R.G., Vordermeier, H.M. (2006). Development of vaccines against bovine tuberculosis. *J. Pharm. Pharmacol.* 58, 749–757.
 16. Thom, M.L., McAulay, M., Vordermeier, H.M.,

- Clifford, D., Hewinson, R.G., Villarreal-Ramos, B., Hope, J.C. (2012). Duration of immunity against *Mycobacterium bovis* following neonatal vaccination with bacillus Calmette-Guérin Danish: significant protection against infection at 12, but not 24, months. *Clin. Vaccine Immunol.* 19, 1254-1260.
17. Villarreal-Ramos, B., Berga, S., Chamberlaina, L., McShane, H., Hewinson, R.G., Clifford, D., Vordermeier, M. (2014). Development of a BCG challenge model for the testing of vaccine candidates against tuberculosis in cattle. *Vaccine.* 32, 5645–5649.
18. Ameni, G., Vordermeier, H.M., Aseffa, A., Young, D.B., Hewinson, R.G. (2010). Field evaluation of the efficacy of *Mycobacterium bovis* bacillus Calmette–Guerin against bovine tuberculosis in neonatal calves in Ethiopia. *Clin. Vaccine Immunol.* 17, 1533–1538.
19. Wedlock, D.N., Bridget, V., Skinner, M.A., de Lisle, G.W., Orme, I.M., Buddle, B.M. (2000). Vaccination of cattle with *Mycobacterium bovis* culture filtrate proteins and interleukin-2 for protection against bovine tuberculosis. *Infect. Immun.* 68, 5809–5815.
20. Rizzi, C., Bianco, M.V., Blanco, F.C., Soria, M., Gravisaco, M.J., Montenegro, V., Vagnoni, L., Buddle, B., Garbaccio, S., Delgado, F., Leal, K.S., Cataldi, A.A., Dellagostin, O.A., Bigi, F. (2012). Vaccination with a BCG strain overexpressing Ag85B protects cattle against *Mycobacterium bovis* challenge. *PLoS One* 7:e51396. doi: 10.1371/journal.pone.0051396.
21. Liébana, E., Girvin, R.M., Welsh, M.D., Neill, S.D., Pollock, J.M. (1999). Generation of CD8+ T-cell responses to *Mycobacterium bovis* and mycobacterial antigen in experimental bovine tuberculosis. *Infect. Immun.* 67, 1034–1044.
22. Nonnecke, B.J., Waters, W.R., Foote, M.R., Palmer, M.V., Miller, B.L., Johnson, T.E., Perry, H.B., Fowler, M.A. (2005). Development of an adult-like cell-mediated immune response in calves after early vaccination with *Mycobacterium bovis* bacillus Calmette-Guérin. *J. Dairy Sci.* 88, 195–210.
23. Maue, A.C., Waters, W.R., Davis, W.C., Palmer, M.V., Minion, F.C., Estes, D.M., (2005). Analysis of immune responses directed toward a recombinant early secretory antigenic target six-kilodalton protein-culture filtrate protein 10 fusion protein in *Mycobacterium bovis*-infected cattle. *Infect. Immun.* 73, 6659–6667.
24. Welsh, M.D., Kennedy, H.E., Smyth, A.J., Girvin, R.M., Andersen, P., Pollock, J.M. (2002). Responses of bovine WC1+ $\gamma\delta$ T cells to protein and nonprotein antigens of *Mycobacterium bovis*. *Infect. Immun.* 70, 6114–6120.
25. Jutila, M.A., Holderness, J., Graff, J.C., Hedges, J.F. (2008). Antigen-independent priming: a transitional response of bovine gamma delta T-cells to infection. *Anim. Health Res. Rev.* 9, 47-57.
26. Cantrell, D.A., Smith, K.A. (1983). Transient expression of interleukin 2 receptors. Consequences for T cell growth. *J. Exp. Med.* 158, 1895–1911.
27. Collins, R.A., Sopp, P., Gelder, K.I., Morrison, W.I., Howard, C.J. (1996). Bovine $\gamma\delta$ TcR1 T lymphocytes are stimulated to proliferate by autologous *Theileria annulata*-infected cells in the presence of interleukin-2. *Scand. J. Immunol.* 44, 444–452.
28. Whelan, A.O., Coadm M., Upadhyay, B.L., Clifford, D.J., Hewinson, R.G., Vordermeier, H.M. (2011). Lack of correlation between BCG-induced tuberculin skin test sensitization and protective immunity in cattle. *Vaccine* 29, 5453–5458.
29. Buddle, B.M., de Lisle, G.W., Pfeffer, A., Aldwell, F.E. (1995). Immunological responses and protection against *Mycobacterium bovis* in calves vaccinated with a low dose of BCG. *Vaccine* 13, 1123-1130.
30. Brosch, R., Gordon, S.V., Garnier, T., Eiglmeier, K.,

- Frigui, W., Valenti, P., Dos Santos, S., Duthoy, S., Lacroix, C., Garcia-Pelayo, C., Inwald, J.K., Golby, P., Garcia, J.N., Hewinson, R.G., Behr, M.A., Quail, M.A., Churcher, C., Barrell, B.G., Parkhill, J., Cole, S.T. (2007). Genome plasticity of BCG and impact on vaccine efficacy. *Proc. Natl. Acad. Sci. USA* 104, 5596–5601.
31. Davids, V., Hanekom, W.A., Mansoor, N., Gamielien, H., Gelderbloem, S.J., Hawkrige, A., Hussey, G.D., Hughes, E.J., Soler, J., Murray, R.A., Ress, S.R., Kaplan, G. (2006). The effect of Bacille Calmette–Guerin vaccine strain and route of administration on induced immune responses in vaccinated infants. *J. Infect. Dis.* 193, 531–536.
32. Kröger, L., Korppi, M., Brander, E., Kröger, H., Wasz-Höckert, O., Backman, A., Rapola, J., Launiala, K., Katila, M.L. (1995). Osteitis caused by bacille Calmette–Guerin vaccination: a retrospective analysis of 222 cases. *J. Infect. Dis.* 172, 574–576.
33. Gheorghiu, M., Lagrange, P.H. (1983). Viability, heat stability and immunogenicity of four BCG vaccines prepared from four different BCG strains. *Ann. Immunol. Paris* 134C, 125–147.
34. Aronson, N.E., Santosham, M., Comstock, G.W., Howard, R.S., Moulton, L.H., Rhoades, E.R. (2004). Long-term efficacy of BCG vaccine in American Indians and Alaska Natives: a 60-year follow-up study. *JAMA* 291, 2086–2091.
35. Canto Alarcon, G.J., Rubio Venegas, Y., Bojorquez Narvaez, L., Pizano Martínez, O.E., García Casanova, L., Sosa Gallegos, S., Nava Vargas, A., Olvera Ramírez, A.M., Milian Suazo, F. (2013). Efficacy of a vaccine formula against tuberculosis in cattle. *PLoS One* 8:e76418. doi: 10.1371/journal.pone.0076418
36. Ota, M.O., Goetghebuer, T., Vekemans, J., Okoko, B.J., Newport, M.J., McAdam, K.P., Marchant, A. (2006). Dissociation between tuberculin skin test and in vitro IFN-gamma responses following neonatal BCG vaccination. *J. Trop. Pediatr.* 52, 136–140.
37. Orme, I.M., Collins, F.M. (1984). Adoptive protection of the *Mycobacterium tuberculosis*-infected lung. Dissociation between cells that passively transfer protective immunity and those that transfer delayed-type hypersensitivity to tuberculin. *Cell Immunol.* 84, 113–120.
38. Pais, T.F., Silva, R.A., Smedegaard, B., Appelberg, R. (1998). Andersen P. Analysis of T cells recruited during delayed-type hypersensitivity to purified protein derivative PPD versus challenge with tuberculosis infection. *Immunology* 95, 69–75.